

Unipoles

Dammam/Khobar
2021



UNIPOLE

E-11 | A

Market: Dhahran

Location: Khobar Dhahran Road - Dammam Exit

Direction: Northwards

Face / Type: A / Static

Lighting: Frontlit

Size: 14.65m x 4.5m

Exposure: 100% share of voice

Coordinates: 26.31745833 50.15294167

Map Link: [Click Here](#)



Request Or Download Specification Sheet For Exact Dimensions And File Formats

UNIPOLE

E-11 | B

Market: Dhahran

Location: Khobar Dhahran Road - Dammam Exit

Direction: Northwards

Face / Type: B / Static

Lighting: Frontlit

Size: 14.65m x 4.5m

Exposure: 100% share of voice

Coordinates: 26.31745833 50.15294167

Map Link: [Click Here](#)



Request Or Download Specification Sheet For Exact Dimensions And File Formats

UNIPOLE

E-15 | A

- Market: **Dammam**
- Location: **King Fahed Road - Green Hall**
- Direction: **Southwards**
- Face / Type: **A / Static**
- Lighting: **Frontlit**
- Size: **14.65m x 4.5m**
- Exposure: **100% share of voice**
- Coordinates: **26.361928 50.186033**
- Map Link: [Click Here](#)



*Request Or Download Specification Sheet For Exact Dimensions And File Formats

UNIPOLE

E-15 | B

| | |
|--------------|------------------------------|
| Market: | Dammam |
| Location: | King Fahed Road - Green Hall |
| Direction: | Southwards |
| Face / Type: | B / Static |
| Lighting: | Frontlit |
| Size: | 14.65m x 4.5m |
| Exposure: | 100% share of voice |
| Coordinates: | 26.361928 50.186033 |
| Map Link: | Click Here |



UNIPOLE

E-17 | A

Market: Dhahran

Location: Dhahran Khobar Road Towards Khobar Near Rashid Mall

Direction: Southwards

Face / Type: A / Static

Lighting: Frontlit

Size: 14.65m x 4.27m

Exposure: 100% share of voice

Coordinates: 26.28971944 50.17658333

Map Link: [Click Here](#)



UNIPOLE

E-17 | B

Market: Dhahran

Location: Dhahran Khobar Road Towards Khobar Near Rashid Mall

Direction: Southwards

Face / Type: B / Static

Lighting: Frontlit

Size: 14.65m x 4.27m

Exposure: 100% share of voice

Coordinates: 26.28971944 50.17658333

Map Link: [Click Here](#)



UNIPOLE

E-18 | A

Market: Dhahran

Location: Dhahran Khobar Road - Dhahran Mall 03

Direction: Southwards

Face / Type: A / Static

Lighting: Frontlit

Size: 14.65m x 4.27m

Exposure: 100% share of voice

Coordinates: 26.30053889 50.16248056

Map Link: [Click Here](#)



UNIPOLE

E-18 | B

Market: Dhahran

Location: Dhahran Khobar Road - Dhahran Mall 03

Direction: Southwards

Face / Type: B / Static

Lighting: Frontlit

Size: 14.65m x 4.27m

Exposure: 100% share of voice

Coordinates: 26.30053889 50.16248056

Map Link: [Click Here](#)



DIGITAL UNIPOLE

E-21 | A

- Market: Dhahran
- Location: Dhahran Khobar Road Towards Khobar Near Centerpoint
- Direction: Southwards
- Face / Type: A / Digital
- Lighting: LED
- Size: 14.4 x 4.8
- Exposure: 10" every 50" (subject to variance)
- Coordinates: 26.29173056 50.17333889
- Map Link: [Click Here](#)



*Request Or Download Specification Sheet For Exact Dimensions And File Formats

UNIPOLE

E-21 | B

Market: Dhahran

Location: Dhahran Khobar Road Towards Khobar Near Centerpoint

Direction: Southwards

Face / Type: B / Static

Lighting: Backlit

Size: 14.22m x 4.62m

Exposure: 100% share of voice

Coordinates: 26.29173056 50.17333889

Map Link: [Click Here](#)



Picture
To Be
Updated

UNIPOLE

E-22 | A

Market: **Al Khobar**

Location: **Dhahran Khobar Road Towards Khobar
Opposite Rashid Mall**

Direction: **Southwards**

Face / Type: **A / Static**

Lighting: **Frontlit**

Size: **14m x 4m**

Exposure: **100% share of voice**

Coordinates: **26.28898889 50.17861111**

Map Link: [Click Here](#)



Request Or Download Specification Sheet For Exact Dimensions And File Formats

UNIPOLE

E-22 | B

Market: **Al Khobar**

Location: **Dhahran Khobar Road Towards Khobar
Opposite Rashid Mall**

Direction: **Southwards**

Face / Type: **B / Static**

Lighting: **Frontlit**

Size: **14m x 4m**

Exposure: **100% share of voice**

Coordinates: **26.28898889 50.17861111**

Map Link: [Click Here](#)



DIGITAL UNIPOLE

E-24 | A

Market: **Al Khobar**

Location: **Khobar Cornish Road - Behind Meridian Hotel**

Direction: **Southwards**

Face / Type: **A / Digital**

Lighting: **LED**

Size: **14.3 x 4.6**

Exposure: **10" every 50" (subject to variance)**

Coordinates: **26.30352222 50.22621667**

Map Link: [Click Here](#)



UNIPOLE

E-24 | B

Market: **Al Khobar**

Location: **Khobar Cornish Road - Behind Meridian Hotel**

Direction: **Southwards**

Face / Type: **B / Static**

Lighting: **Backlit**

Size: **14.1m x 4.4m**

Exposure: **100% share of voice**

Coordinates: **26.30352222 50.22621667**

Map Link: [Click Here](#)



Picture
To Be
Updated

UNIPOLE

E-25 | A

- Market: **Dammam**
- Location: **King Fahed Road - Aramco Entrance**
- Direction: **Northwards**
- Face / Type: **A / Static**
- Lighting: **Frontlit**
- Size: **14.65m x 4.27m**
- Exposure: **100% share of voice**
- Coordinates: **26.38306944 50.16468056**
- Map Link: [Click Here](#)



Request Or Download Specification Sheet For Exact Dimensions And File Formats

UNIPOLE

E-25 | B

- Market: **Dammam**
- Location: **King Fahed Road - Aramco Entrance**
- Direction: **Northwards**
- Face / Type: **B / Static**
- Lighting: **Frontlit**
- Size: **14.65m x 4.27m**
- Exposure: **100% share of voice**
- Coordinates: **26.38306944 50.16468056**
- Map Link: [Click Here](#)



DIGITAL UNIPOLE

E-31 | A

Market: **Dammam**

Location: **Dhahran Jubail Branch Road Near to Hira Park**

Direction: **Southwards**

Face / Type: **A / Digital**

Lighting: **LED**

Size: **14.3m x 4.6m**

Exposure: **10" every 50" (subject to variance)**

Coordinates: **26.41513333 50.0641**

Map Link: [Click Here](#)



UNIPOLE

E-31 | B

Market: **Dammam**

Location: **Dhahran Jubail Branch Road Near to Hiraa Park**

Direction: **Southwards**

Face / Type: **B / Static**

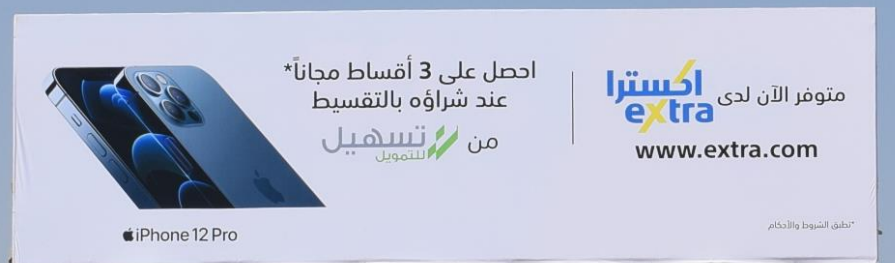
Lighting: **Backlit**

Size: **14.1m x 4.4m**

Exposure: **100% share of voice**

Coordinates: **26.41513333 50.0641**

Map Link: [Click Here](#)



Request Or Download Specification Sheet For Exact Dimensions And File Formats

Picture
To Be
Updated

UNIPOLE

E-35 | A

Market: **Dammam**

Location: **Al Khaleej Road - Dammam Cornish Road -
Beside Sails Roundabout**

Direction: **Eastwards**

Face / Type: **A / Static**

Lighting: **Frontlit**

Size: **14.65m x 4.27m**

Exposure: **100% share of voice**

Coordinates: **26.45578056 50.11066667**

Map Link: [Click Here](#)



UNIPOLE

E-35 | B

Market: **Dammam**

Location: **Al Khaleej Road - Dammam Cornish Road -
Beside Sails Roundabout**

Direction: **Eastwards**

Face / Type: **B / Static**

Lighting: **Frontlit**

Size: **14.65m x 4.27m**

Exposure: **100% share of voice**

Coordinates: **26.45578056 50.11066667**

Map Link: [Click Here](#)



UNIPOLE

E-36 | A

Market: **Dammam**

Location: **King Fahed Road Towards Dammam Near To Tawuniya Insurance**

Direction: **Northwards**

Face / Type: **A / Static**

Lighting: **Frontlit**

Size: **14.65m x 4.27m**

Exposure: **100% share of voice**

Coordinates: **26.38839167 50.15874444**

Map Link: [Click Here](#)



Request Or Download Specification Sheet For Exact Dimensions And File Formats

UNIPOLE

E-36 | B

Market: **Dammam**

Location: **King Fahed Road Towards Dammam Near To Tawuniya Insurance**

Direction: **Northwards**

Face / Type: **B / Static**

Lighting: **Frontlit**

Size: **14.65m x 4.27m**

Exposure: **100% share of voice**

Coordinates: **26.38839167 50.15874444**

Map Link: [Click Here](#)



Request Or Download Specification Sheet For Exact Dimensions And File Formats

DIGITAL UNIPOLE

E-39 | A

Market: **Al Khobar**

Location: **Prince Turki Street - Al Khobar Cornish
Entrance**

Direction: **Northwards**

Face / Type: **A / Digital**

Lighting: **LED**

Size: **14.4m x 4.8m**

Exposure: **10" every 50" (subject to variance)**

Coordinates: **26.28453333 50.21960556**

Map Link: [Click Here](#)



DIGITAL UNIPOLE

E-39 | B

- Market: **Al Khobar**
- Location: **Prince Turki Street - Al Khobar Cornish Entrance**
- Direction: **Northwards**
- Face / Type: **B / Digital**
- Lighting: **LED**
- Size: **14.4m x 4.8m**
- Exposure: **10" every 50" (subject to variance)**
- Coordinates: **26.28453333 50.21960556**
- Map Link: [Click Here](#)



*Request Or Download Specification Sheet For Exact Dimensions And File Formats

UNIPOLE

E-43 | A

Market: **Al Khobar**

Location: **King Khalid Road Opposite To Farm Market**

Direction: **Southwards**

Face / Type: **A / Static**

Lighting: **Frontlit**

Size: **14.65m x 4.27m**

Exposure: **100% share of voice**

Coordinates: **26.201175 50.19531667**

Map Link: [Click Here](#)



Request Or Download Specification Sheet For Exact Dimensions And File Formats

UNIPOLE

E-43 | B

Market: **Al Khobar**

Location: **King Khalid Road Opposite To Farm Market**

Direction: **Southwards**

Face / Type: **B / Static**

Lighting: **Frontlit**

Size: **14.65m x 4.27m**

Exposure: **100% share of voice**

Coordinates: **26.201175 50.19531667**

Map Link: [Click Here](#)



DIGITAL UNIPOLE

E-45 | A

Market: **Al Khobar**

Location: **King Fahed Road Near Sport City Drive**

Direction: **Southwards**

Face / Type: **A / Digital**

Lighting: **LED**

Size: **14.4m x 4.8m**

Exposure: **10" every 50" (subject to variance)**

Coordinates: **26.35841944 50.187975**

Map Link: [Click Here](#)



UNIPOLE

E-45 | B

Market: Al Khobar

Location: King Fahed Road Near Sport City Drive

Direction: Southwards

Face / Type: B / Static

Lighting: Backlit

Size: 14.22m x 4.62m

Exposure: 100% share of voice

Coordinates: 26.35841944 50.187975

Map Link: [Click Here](#)



Picture
To Be
Updated

*Request Or Download Specification Sheet For Exact Dimensions And File Formats

UNIPOLE

E-46 | A

Market: **Dammam**

Location: **King Abdullah Road With Dammam Kurnish**

Direction: **Northwards**

Face / Type: **A / Static**

Lighting: **Frontlit**

Size: **14.65m x 4.27m**

Exposure: **100% share of voice**

Coordinates: **26.49487222 50.13428611**

Map Link: [Click Here](#)



*Request Or Download Specification Sheet For Exact Dimensions And File Formats

UNIPOLE

E-46 | B

Market: **Dammam**

Location: **King Abdullah Road With Dammam Kurnish**

Direction: **Northwards**

Face / Type: **B / Static**

Lighting: **Frontlit**

Size: **14.65m x 4.27m**

Exposure: **100% share of voice**

Coordinates: **26.49487222 50.13428611**

Map Link: [Click Here](#)



DIGITAL UNIPOLE

E-47 | A

Market: **Dammam**

Location: **King Fahed Road Beside To Al-Nakhil Mall**

Direction: **Eastwards**

Face / Type: **A / Digital**

Lighting: **LED**

Size: **14.4m x 4.8m**

Exposure: **10" every 50" (subject to variance)**

Coordinates: **26.39309722 50.03527222**

Map Link: [Click Here](#)



UNIPOLE

E-47 | B

Market: **Dammam**

Location: **King Fahed Road Beside To Al-Nakhil Mall**

Direction: **Eastwards**

Face / Type: **A / Static**

Lighting: **Backlit**

Size: **14.22m x 4.62m**

Exposure: **100% share of voice**

Coordinates: **26.39309722 50.03527222**

Map Link: [Click Here](#)



Picture
To Be
Updated

UNIPOLE

E-48 | A

Market: **Al Khobar**

Location: **Intersection of King Khalid Road With Al-Numan Bin Haritha Street**

Direction: **Northwards**

Face / Type: **A / Static**

Lighting: **Frontlit**

Size: **14.65m x 4.27m**

Exposure: **100% share of voice**

Coordinates: **26.20150278 50.19615833**

Map Link: [Click Here](#)



Request Or Download Specification Sheet For Exact Dimensions And File Formats

UNIPOLE

E-48 | B

Market: **Al Khobar**

Location: **Intersection of King Khalid Road With Al-Numan Bin Haritha Street**

Direction: **Northwards**

Face / Type: **B / Static**

Lighting: **Frontlit**

Size: **14.65m x 4.27m**

Exposure: **100% share of voice**

Coordinates: **26.20150278 50.19615833**

Map Link: [Click Here](#)



UNIPOLE

E-49 | A

Market: **Al Khobar**

Location: **Prince Turki Street After Al Khobar Cornish Entrance**

Direction: **Northwards**

Face / Type: **A / Static**

Lighting: **Frontlit**

Size: **14.65m x 4.27m**

Exposure: **100% share of voice**

Coordinates: **26.29019167 50.22068611**

Map Link: [Click Here](#)



UNIPOLE

E-49 | B

Market: Al Khobar

Location: Prince Turki Street After Al Khobar Cornish Entrance

Direction: Northwards

Face / Type: B / Static

Lighting: Frontlit

Size: 14.65m x 4.27m

Exposure: 100% share of voice

Coordinates: 26.29019167 50.22068611

Map Link: [Click Here](#)



DIGITAL UNIPOLE

E-50 | A

Market: **Dammam**

Location: **Al Khaleej Road - Dammam Cornish Road -
Near Al Romansiah Restaurant**

Direction: **Eastwards**

Face / Type: **A / Digital**

Lighting: **LED**

Size: **14.65m x 4.27m**

Exposure: **10" every 50" (subject to variance)**

Coordinates: **26.45589167 50.11325833**

Map Link: [Click Here](#)



DIGITAL UNIPOLE

E-50 | B

Market: **Dammam**

Location: **Al Khaleej Road - Dammam Cornish Road -
Near Al Romansiah Restaurant**

Direction: **Eastwards**

Face / Type: **B / Digital**

Lighting: **LED**

Size: **14.65m x 4.27m**

Exposure: **10" every 50" (subject to variance)**

Coordinates: **26.45589167 50.11325833**

Map Link: [Click Here](#)



DIGITAL UNIPOLE

E-51 | A

Market: **Al Khobar**

Location: **Dhahran Khobar Road Towards Khobar Near Rashid Mall**

Direction: **Westwards**

Face / Type: **A / Digital**

Lighting: **LED**

Size: **14.65m x 4.27m**

Exposure: **10" every 50" (subject to variance)**

Coordinates: **26.2898 50.17890556**

Map Link: [Click Here](#)



*Request Or Download Specification Sheet For Exact Dimensions And File Formats

DIGITAL UNIPOLE

E-51 | B

Market: **Al Khobar**

Location: **Dhahran Khobar Road Towards Khobar Near
Rashid Mall**

Direction: **Westwards**

Face / Type: **B / Digital**

Lighting: **LED**

Size: **14.65m x 4.27m**

Exposure: **10" every 50" (subject to variance)**

Coordinates: **26.2898 50.17890556**

Map Link: [Click Here](#)



Thank You

