

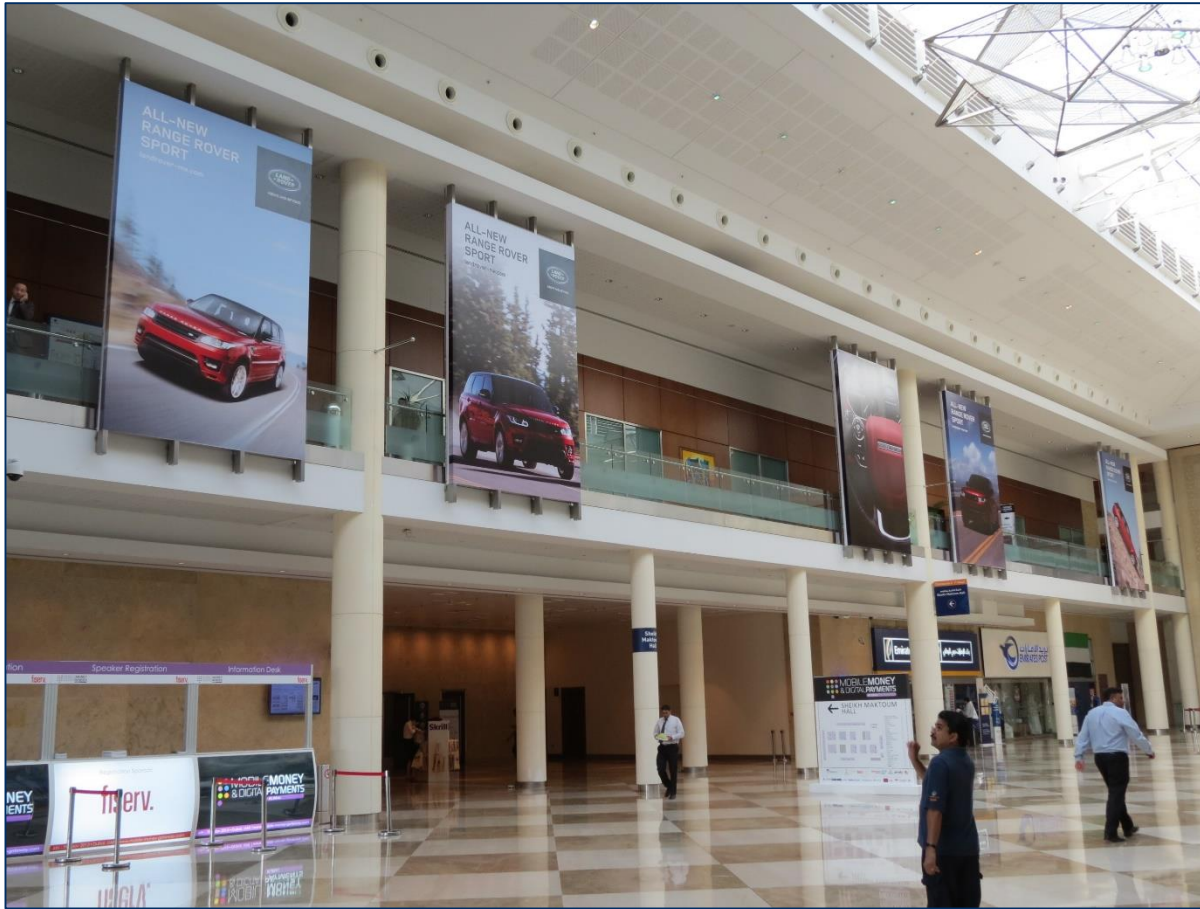
# **ADVERTISING SERVICES**

Dubai World Trade Centre

# Grid Banner

PERFORMANCE

RATE – AED 45,900/- FOR 3 UNITS



## DESCRIPTION

This exclusive network of sites are situated in the concourse area, right on top of halls entrances. Targeted directly at visitors entering the halls, these sites provide a “supersite” location in the heart of the Exhibition center.

## SPECIFICATIONS

Quantity: 12  
Reference: GB  
Size: W 330(cm) x H 545(cm)  
Type: Vinyl Banner

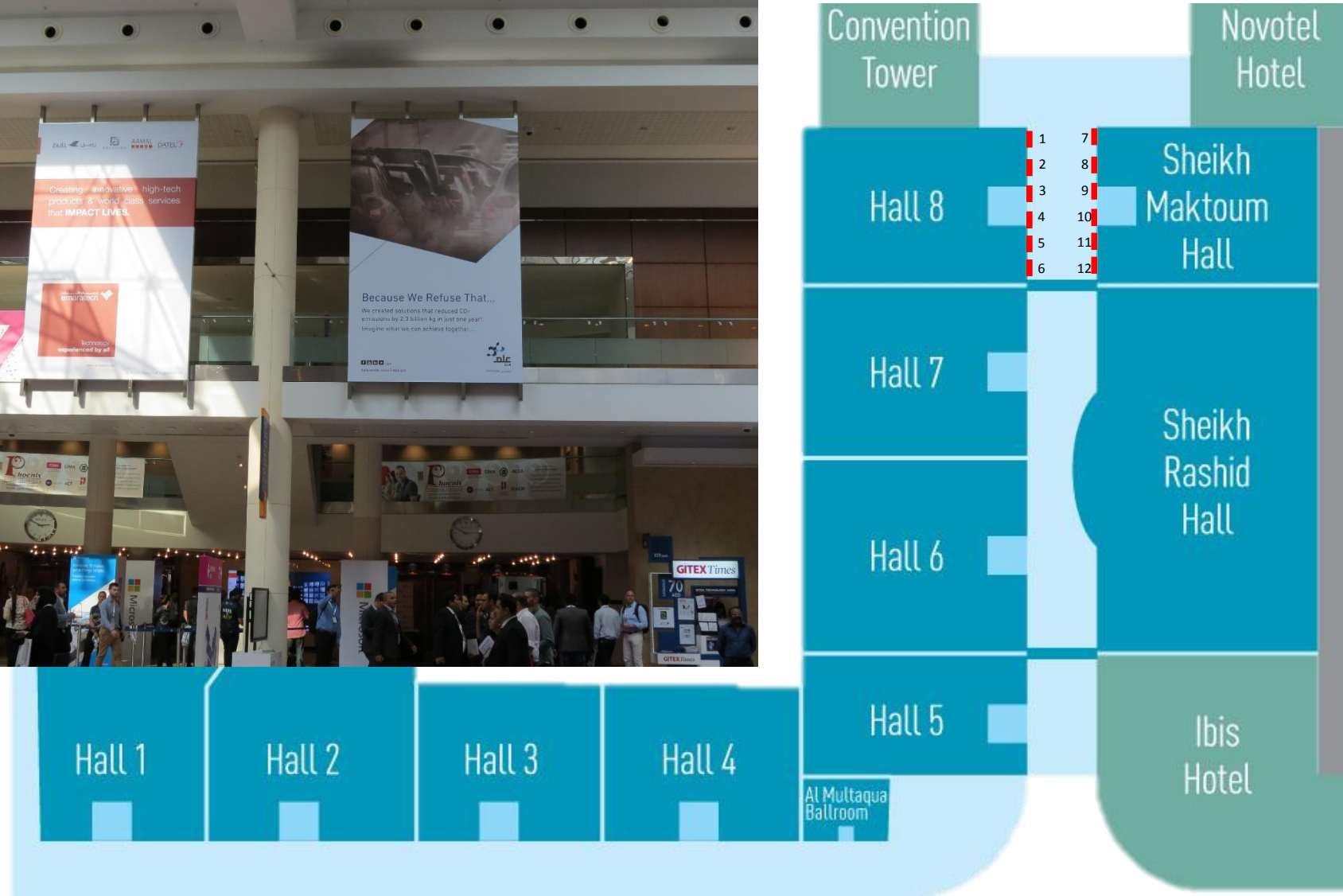
## KEY FACTS

Size	
Reach	
Frequency	
Exposition Time	

# Grid Banner

SITE MAP

REF: GB



# Bridge Banner Arch

PERFORMANCE



## DESCRIPTION

Placed at the entrance of the exhibition center for high visibility, these are the perfect site for advertisers aiming to deliver mass reach messages.

## SPECIFICATIONS

Quantity: 2

Reference: BBA 2 & 4

Size: W 1600(cm) x H 200(cm)

Type: Vinyl Banner

## KEY FACTS

Size



Reach



Frequency



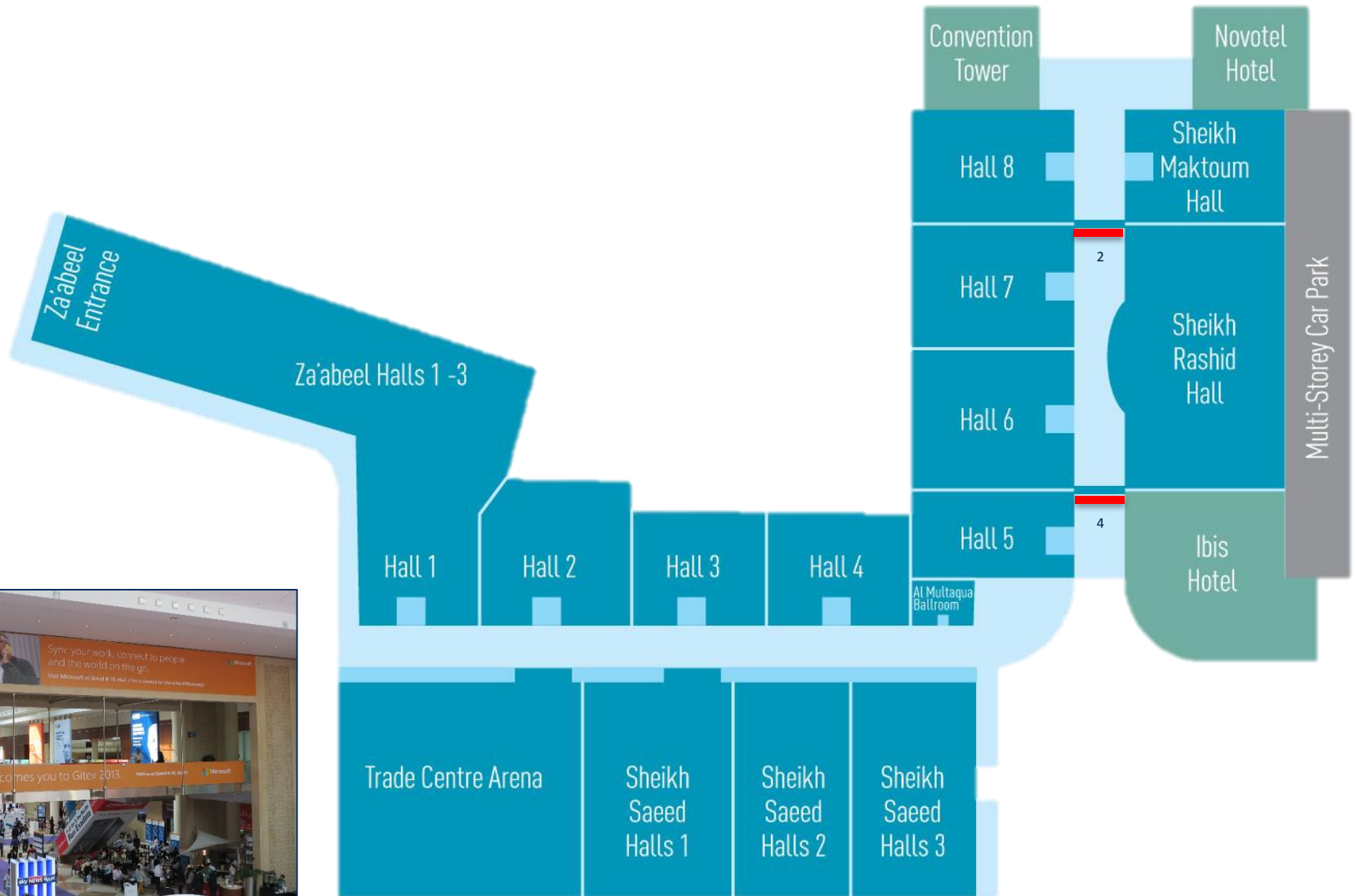
Exposition Time



# Bridge Banner - Arch

SITE MAP

REF: BBA



# Wall Banner

PERFORMANCE

RATE– AED 34,700/- PER UNIT



## DESCRIPTION

Tactically located in the Concourse on the two sides of the bubble lounge & the entrances of Sheikh Rashid Hall, these banners have high visibility across the concourse.

## SPECIFICATIONS

Quantity: 2

Reference: WB

Size: W 300(cm) x H 800(cm)

Type: Vinyl Banner

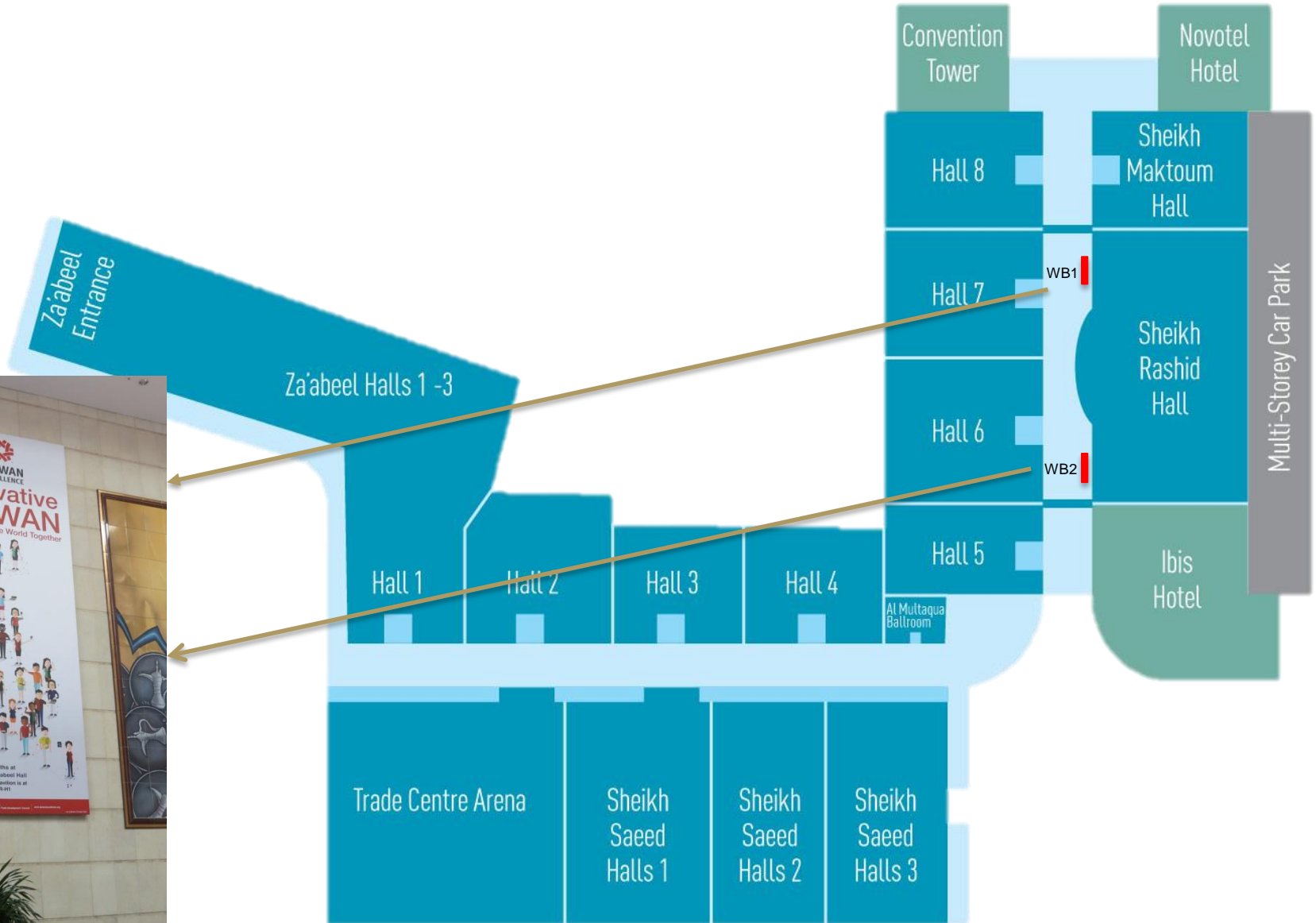
## KEY FACTS

Size	
Reach	
Frequency	
Exposition Time	

# Wall Banner

SITE MAP

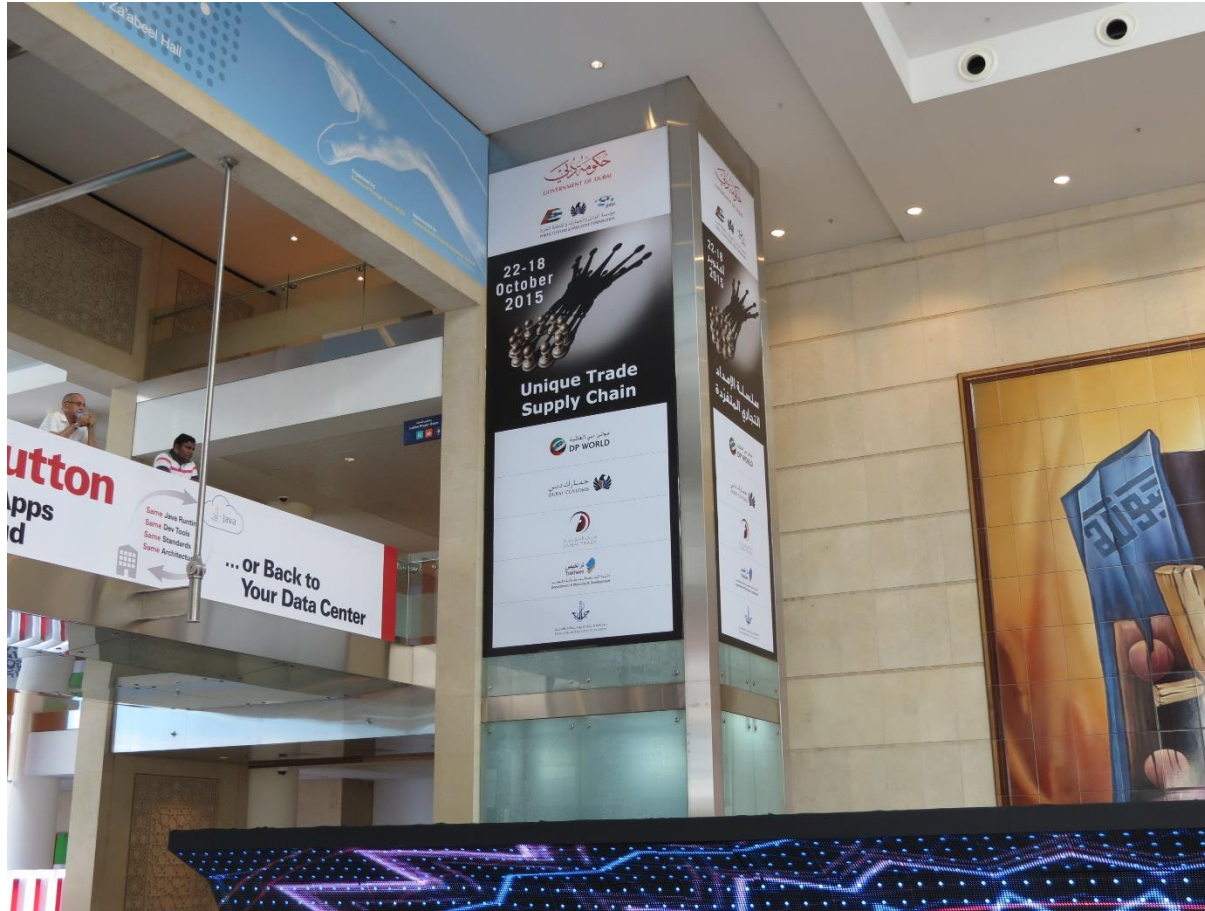
REF: WB



# Elevator

PERFORMANCE

RATE– AED 31,700/- PER UNIT



## DESCRIPTION

These two spectacular displays grab the attention of all visitors walking in the concourse, as well as of visitors coming from the multi -storey parking, and the main & rear gate. These high impact sites leave a lasting impression on the target audience before entering the halls.

## SPECIFICATIONS

Quantity: 2

Reference: EV

Size: W 189(cm) X H 500 (cm)

W 244(cm) X H 500 (cm)

Type: Vinyl Banner

## KEY FACTS

Size



Reach



Frequency



Exposition Time

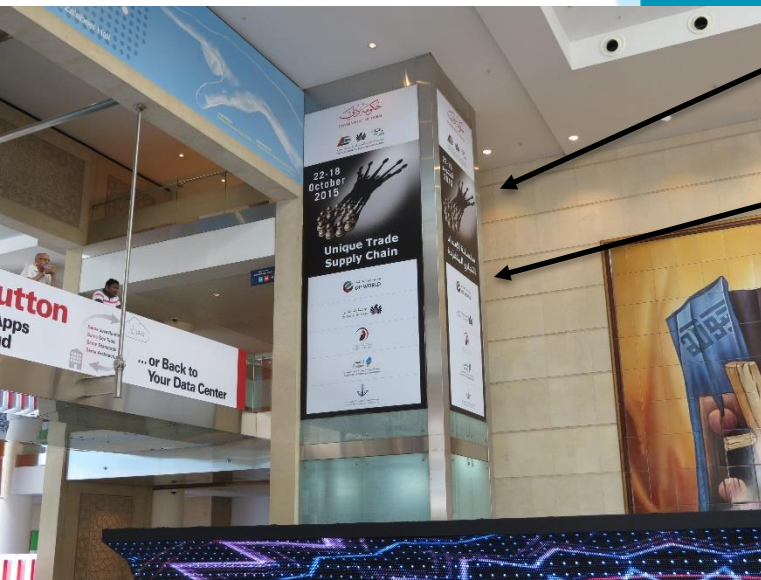
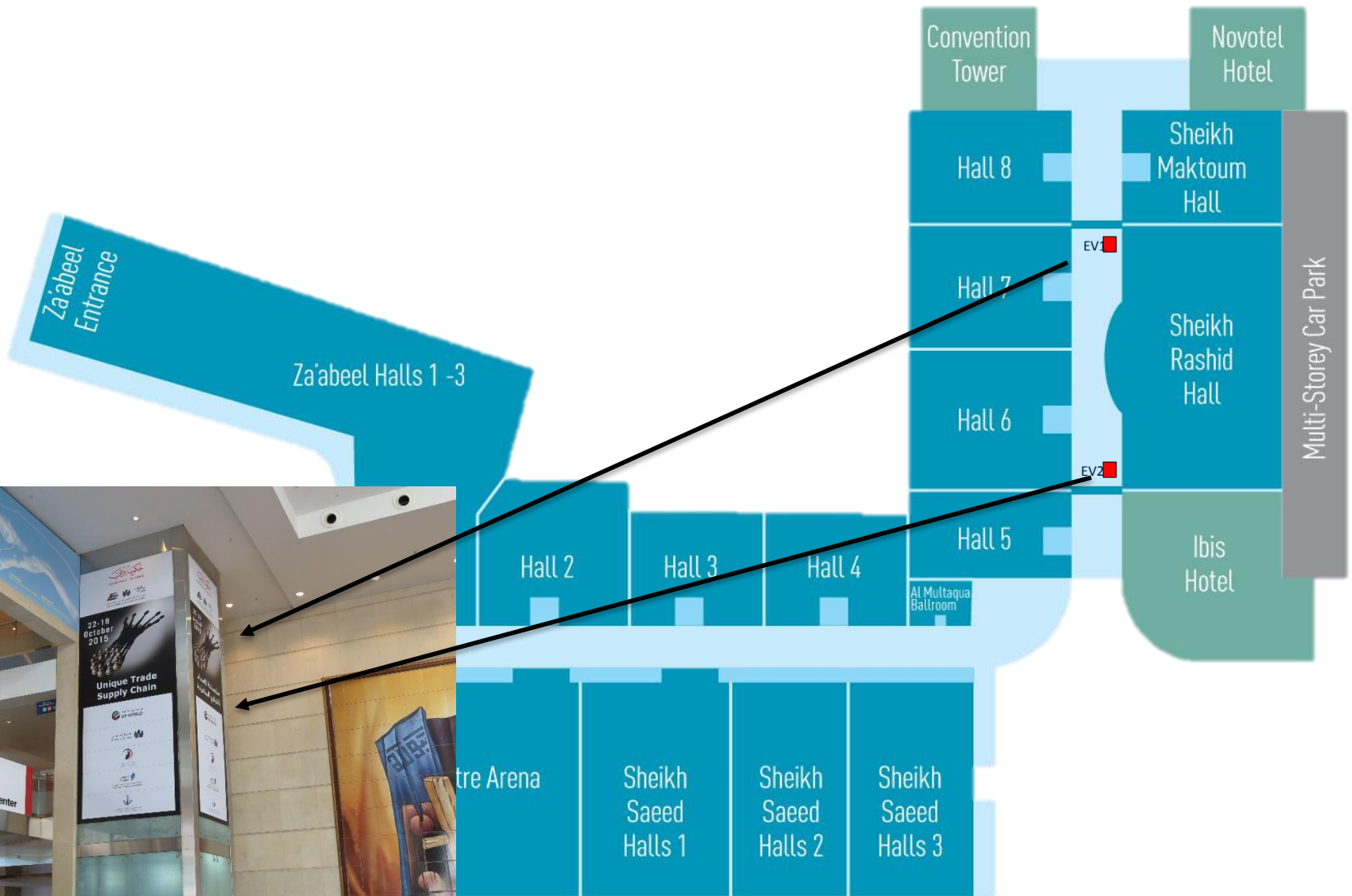




# Elevator

SITE MAP

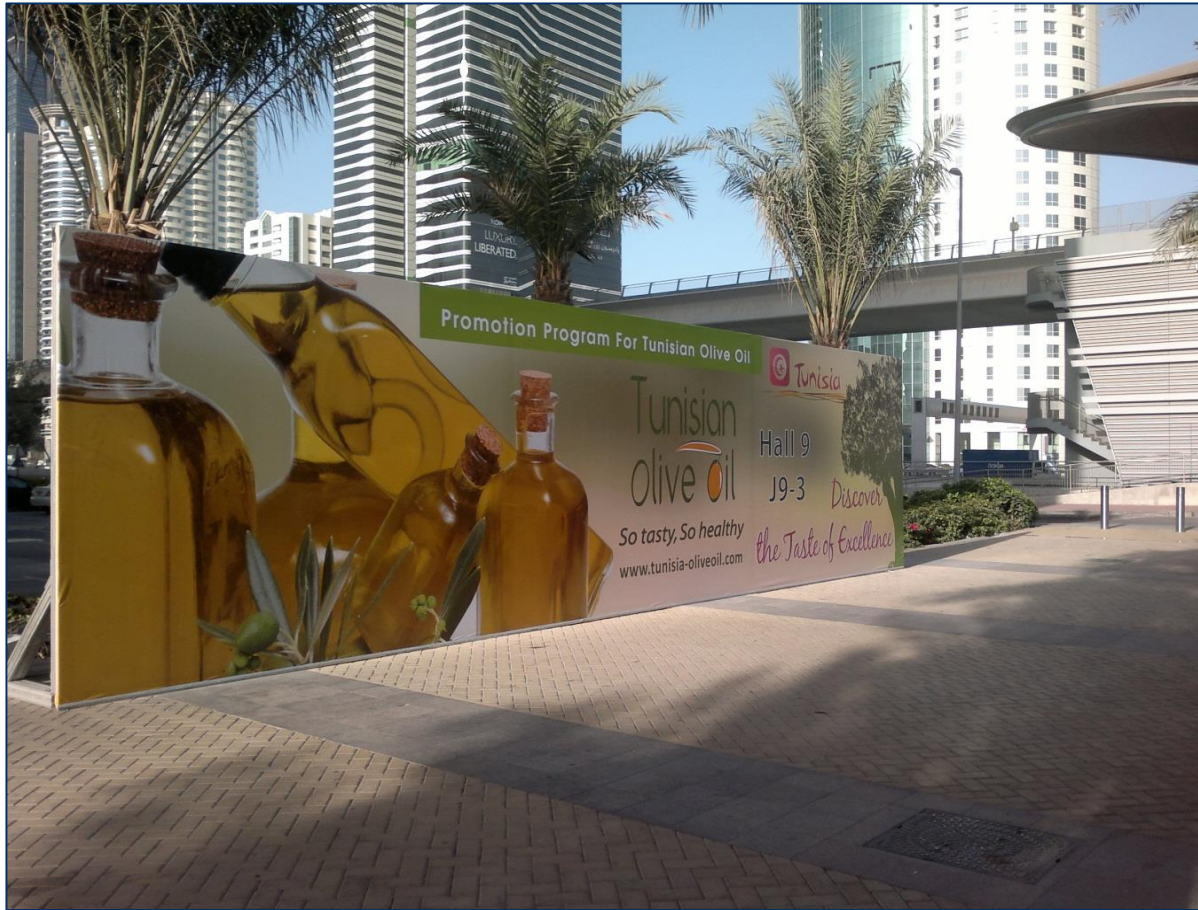
REF: EV



# Outdoor Hoarding - Metro

STRATEGIC

RATE – AED 89,000/-



## DESCRIPTION

This site has a huge impact and high visibility is a major opportunity for the exhibitors targeting to associate their names with the exhibition. This media wraps the 4 sides and is located at the drop off point for visitors entering the Venue from the Convention Entrance.

## SPECIFICATIONS

Quantity: 1

Reference: OHM

Size: 12m width x 3m height

Type: Vinyl banner on aluminum frame

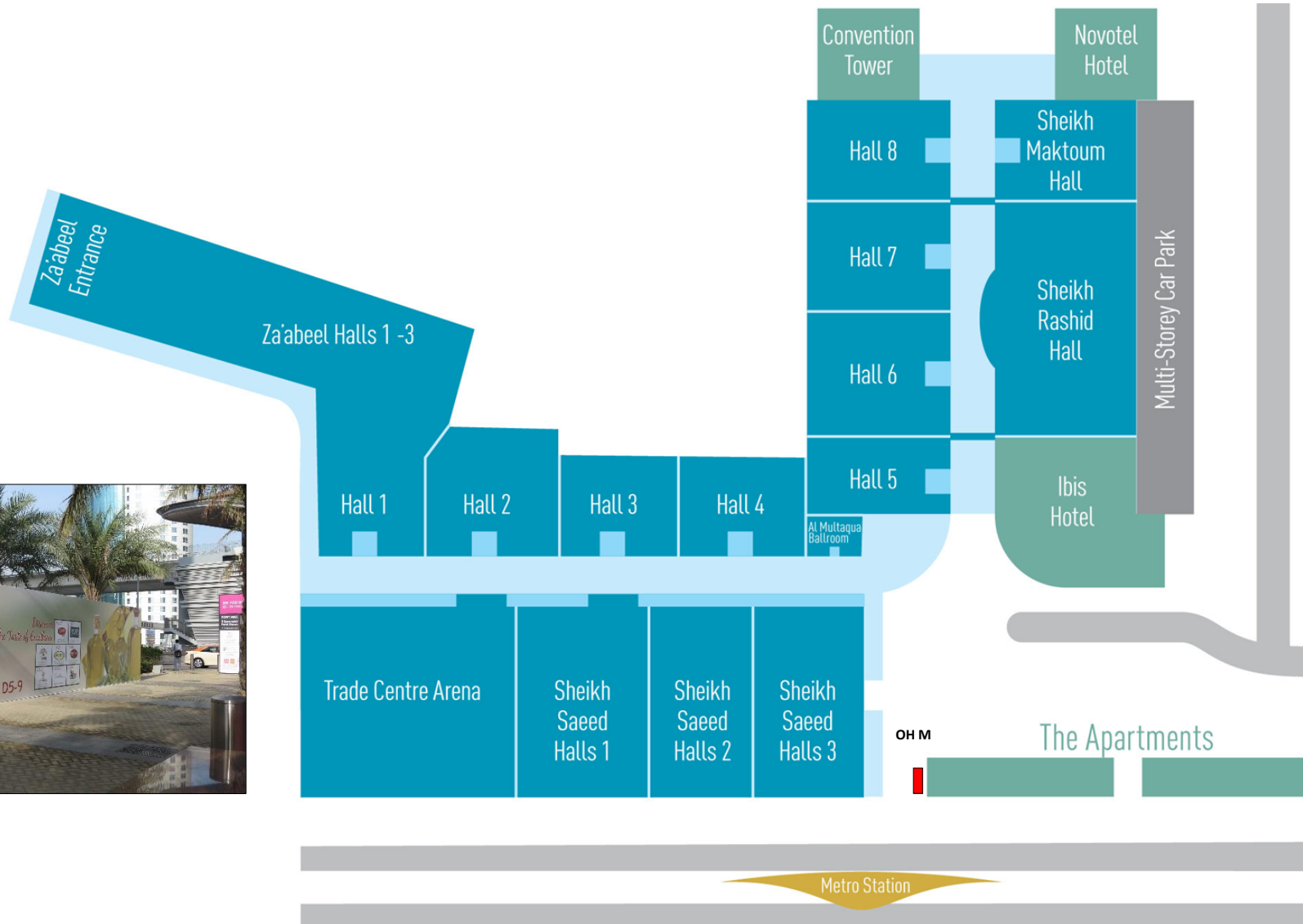
## KEY FACTS

Size	
Reach	
Frequency	
Exposition Time	

# Outdoor Hoarding - Metro

SITE MAP

REF: OHM



# Vertical Panels – Arena Entrance

STRATEGIC

RATE – AED 50,000/- FOR 4 UNITS



## DESCRIPTION

Distinctive branding panels in the foyer area of the hall that creates coherent and reinforced connections between your brand and the audience.

## SPECIFICATIONS

Quantity: 4

Reference: VP9-12

Size:

Type: Vinyl banner on wooden frame

## KEY FACTS

Size



Reach



Frequency



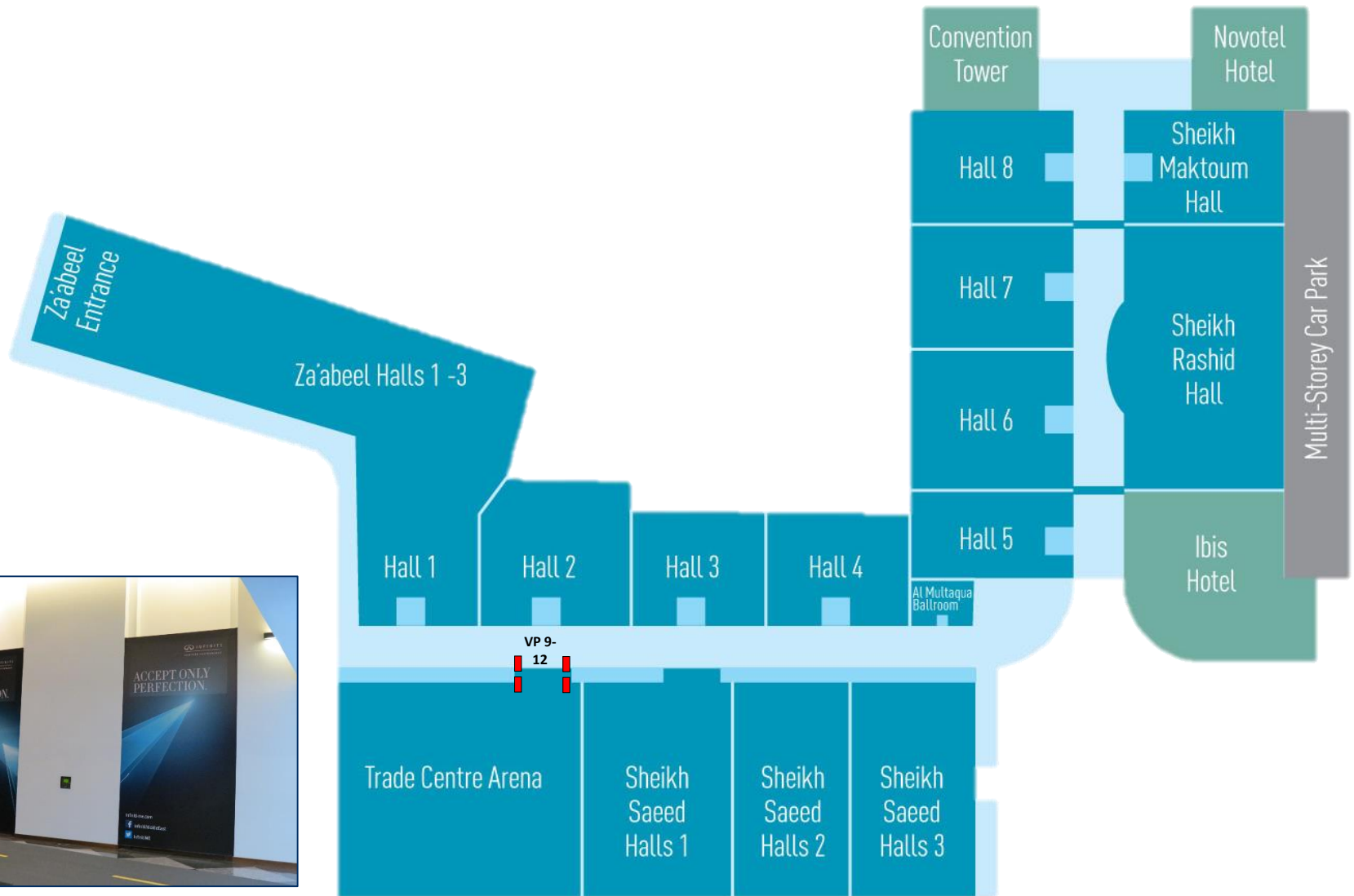
Exposition Time



# Vertical Panels – Arena Entrance

SITE MAP

REF: VP



# Vertical Panels – Shk. Saeed Hall 1 Entrance

STRATEGIC

RATE – AED 50,000/-



## DESCRIPTION

Distinctive branding panels in the foyer area of the hall that creates coherent and reinforced connections between your brand and the audience.

## SPECIFICATIONS

Quantity: 4

Reference: VP5-8

Size

Type: Vinyl banner on wooden frame

## KEY FACTS

Size

Reach

Frequency

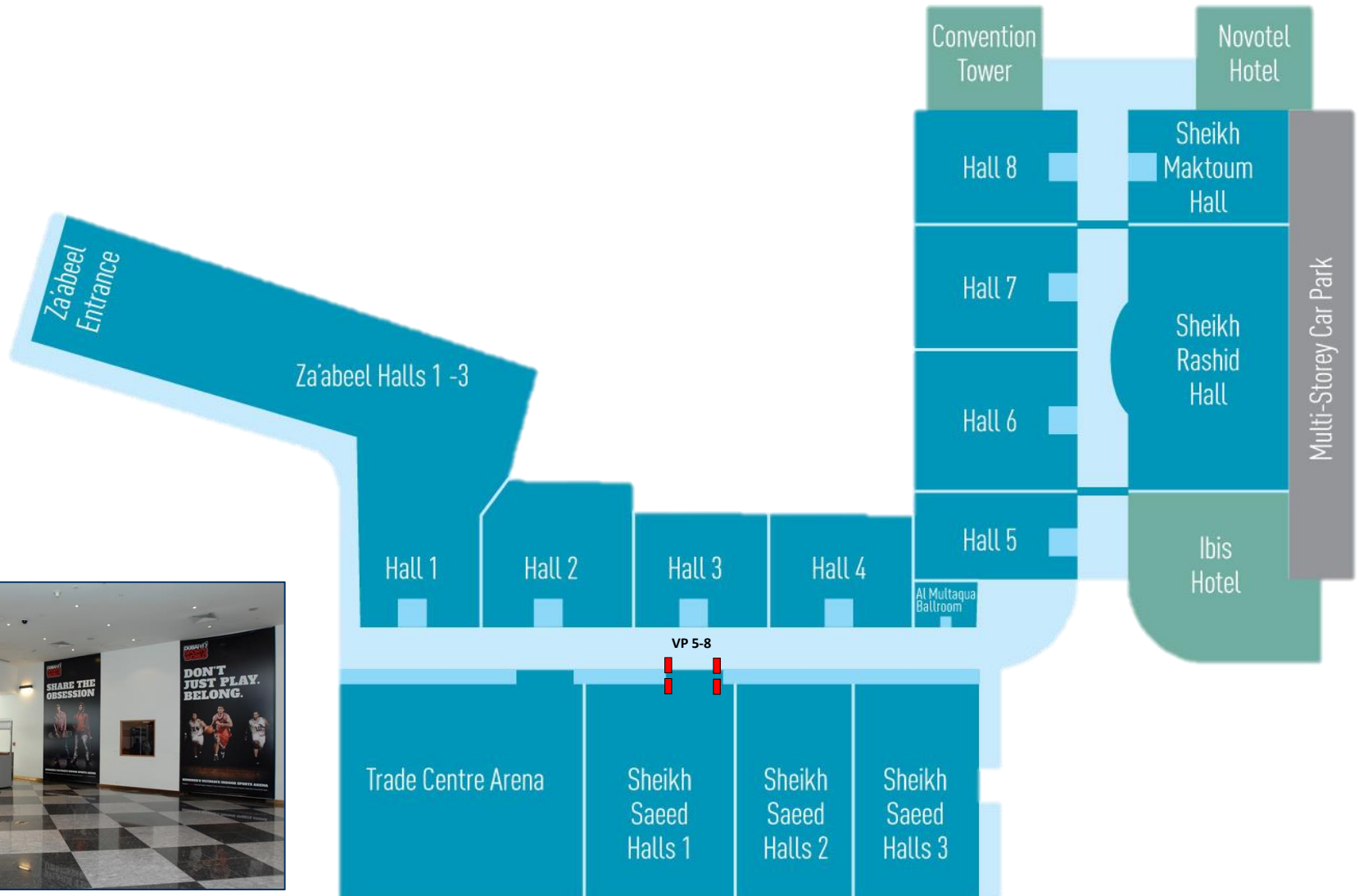
Exposition Time



# Vertical Panels – Saeed Hall 1 Entrance

SITE MAP

REF: VP



# Vertical Panels – Shk. Saeed Hall 3 Entrance

STRATEGIC

RATE – AED 54,000/-



## DESCRIPTION

Distinctive branding panels in the foyer area of the hall that creates coherent and reinforced connections between your brand and the audience.

## SPECIFICATIONS

Quantity: 4

Reference: VP1-4

Size:

Type: Vinyl banner on wooden frame

## KEY FACTS

Size



Reach



Frequency



Exposition Time

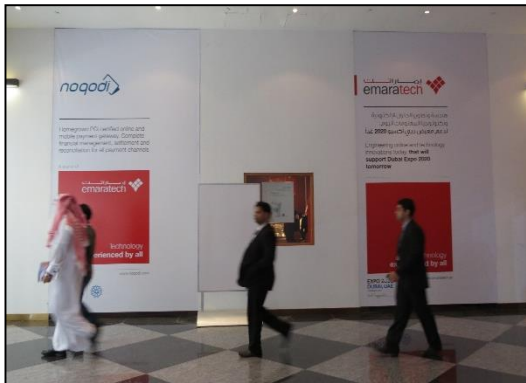
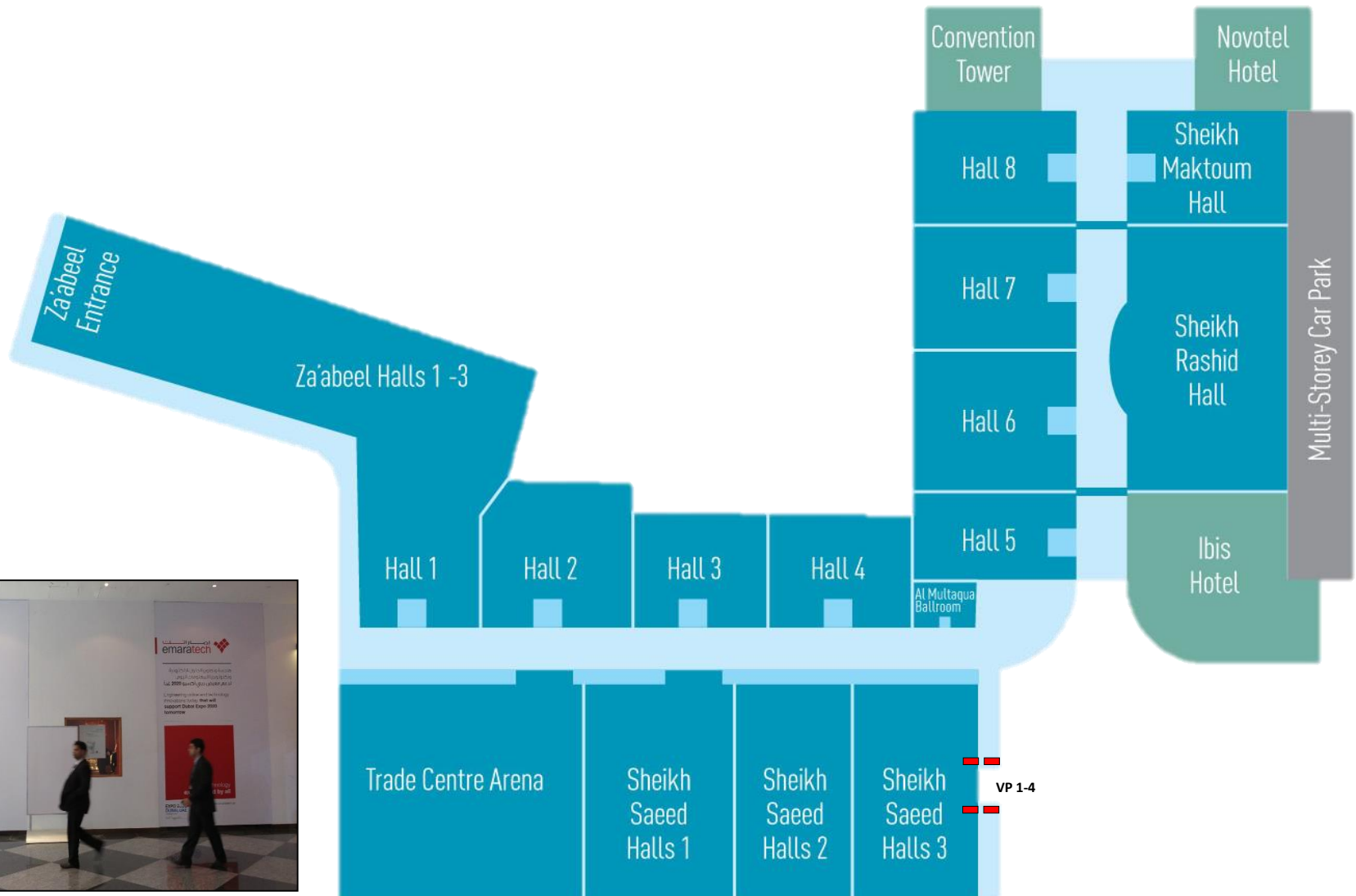




# Vertical Panels – Saeed Hall 3 Entrance

SITE MAP

REF: VP



# Column Cladding

PERFORMANCE

RATE – AED 72,000/- NETWORK OF 8 UNITS



## DESCRIPTION

Located at the hall gates, this eye catching location ensures high exposure for your brand & unforgettable impression among the right audience.

## SPECIFICATIONS

Quantity: 31

Reference: CC

Size: TBA

Type: Vinyl Banner

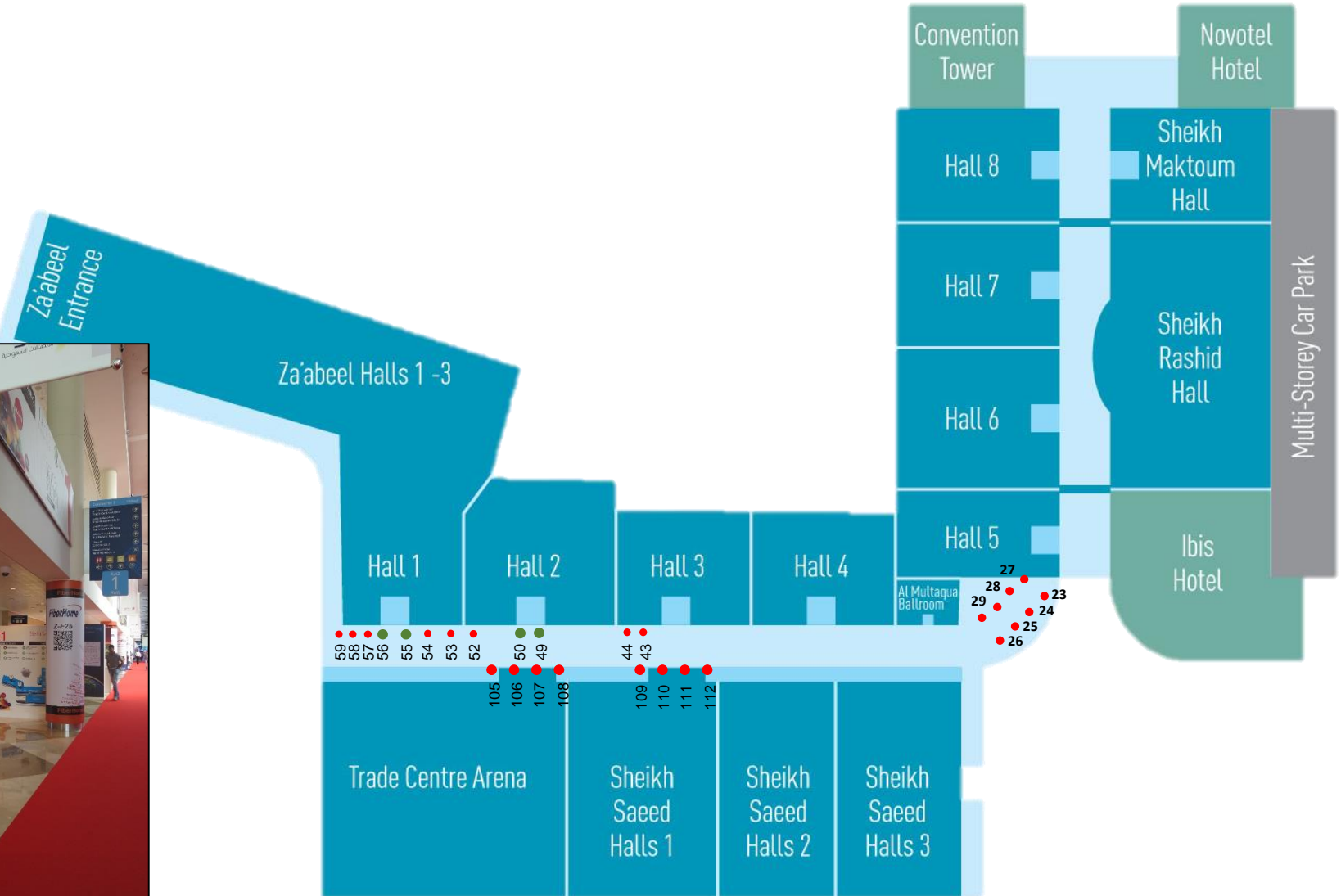
## KEY FACTS

Size	
Reach	
Frequency	
Exposition Time	

# Column Cladding

SITE MAP

REF: CC



# Canopy Banner – 02

PERFORMANCE

RATE – AED 26,500/- PER UNIT



## DESCRIPTION

This impactful site is a major opportunity for the exhibitors targeting to associate their names with the Exhibition.

Covering the front side of the entrance & Plaza, your branding will be the first to be seen for the visitors entering to the exhibition center.

## SPECIFICATIONS

Quantity: 1

Reference: CB2

Size: H 900(cm) x W 500 (cm)

Type: Vinyl Sticker

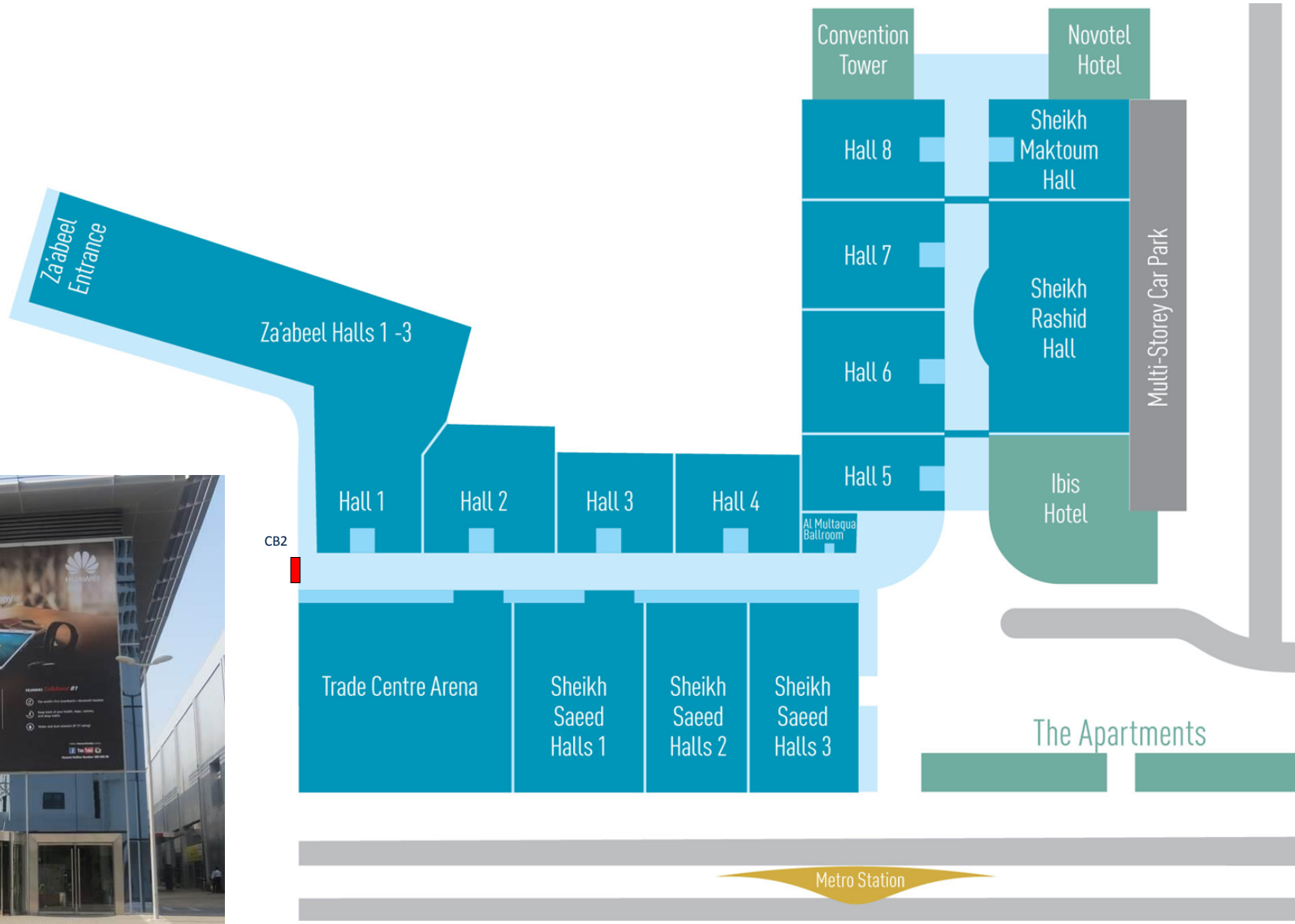
## KEY FACTS

Size	
Reach	
Frequency	
Exposition Time	

# Canopy Banner – Hall 1

SITE MAP

REF: CB



# Outdoor Parking Wallscape

PERFORMANCE

RATE – AED 26,500/- PER UNIT



## DESCRIPTION

This impactful site is a major opportunity for the exhibitors targeting to associate their names with the Exhibition. Covering the front side of the entrance & Plaza, your branding will be the first to be seen for the visitors entering to the exhibition center.

## SPECIFICATIONS

Quantity: 1

Reference: OPW 1, 2

Size: TBA

## KEY FACTS

Size	
Reach	
Frequency	
Exposition Time	

# Outdoor Parking Wallscape

SITE MAP

REF: OPW



# Window Strip – WS3

PERFORMANCE

RATE – AED 31,700/- PER UNIT



## DESCRIPTION

Strategically positioned at the main exhibition entrance, this huge site provides high exposure & visibility due to its unique location.

This space secures high reach at a prime zone in the Exhibition Centre

## SPECIFICATIONS

Quantity: 1

Reference: WS2

Size: 870cm-width x 209-height

Type: Vinyl Banner

## KEY FACTS

Size	
Reach	
Frequency	
Exposition Time	



# Window Strip – WS2

SITE MAP

REF: WS

